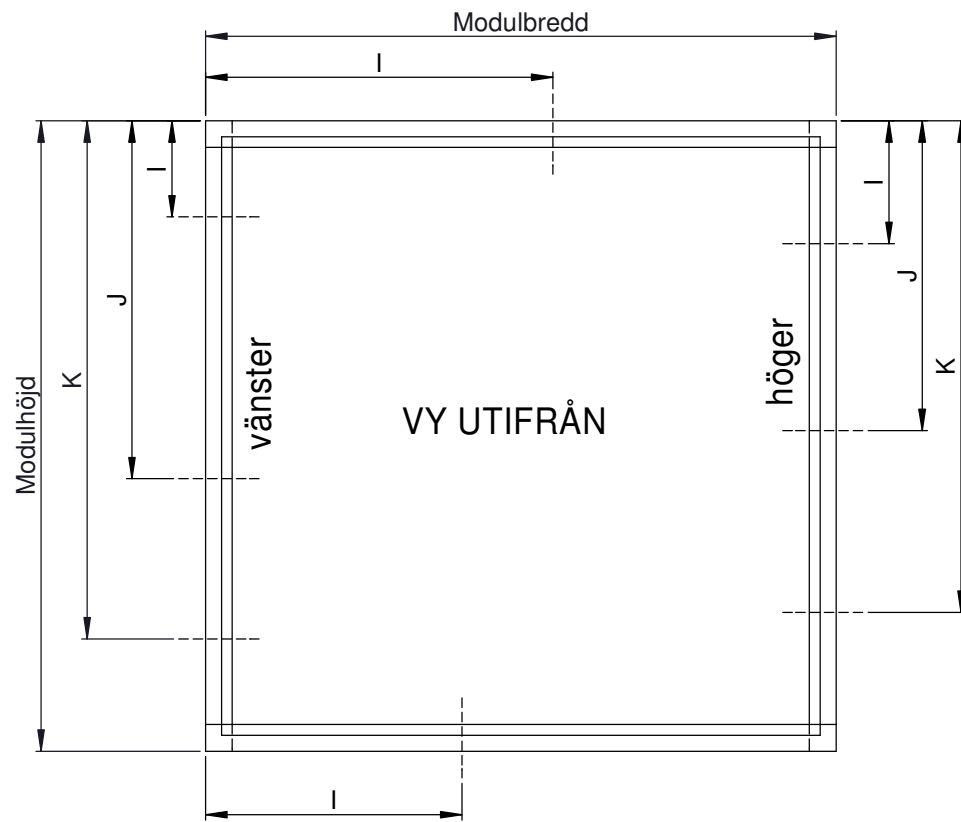
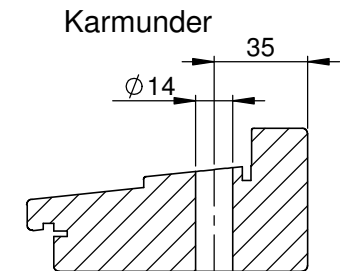
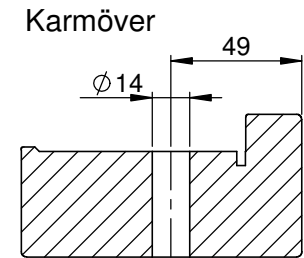


Rev.	Description	Rev. by	Date



## VRID, ÖVERKANTSHÄNGT 1-luft



Karmsida Vänster

Modul	I	J	K
4	85		266
5	95		341
6	145		441
7	138		511
8	188		611
9	238		711
10	158		811
11	208		911
12	258	675	1011
13	308	725	1111
14	253	775	1211
15	303	825	1311
16	353	875	1411
17	180	925	1511
18	230	975	1611

Karmsida Höger

Modul	I	J	K
4	85		266
5	95		291
6	145		391
7	98		461
8	148		561
9	198		661
10	108		761
11	158		861
12	208	625	961
13	258	675	1061
14	203	725	1161
15	253	775	1261
16	303	825	1361
17	130	875	1461
18	180	925	1561

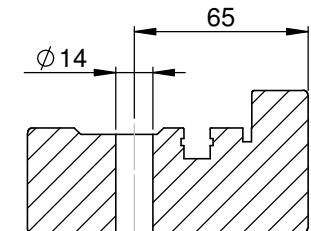
Karmöver

Modul	I
12	694
13	744
14	794
15	844
16	894
17	944
18	994
19	1044
20	1094

Karmunder

Modul	I
12	486
13	536
14	586
15	636
16	686
17	736
18	786
19	836
20	886

Karmsida



Product Category

Window Outward

Product Type

Top Hung; Top Swing

Designed by	Designed date	Approved by	Approved date	Processing Code	Material
JB	2018-02-20		2021-10-21		Pine
					Tolerances unless otherwise specified
					ISO 2768-1 m
					Article Number
Karmskravsplacering, frontvy Vrid, Överkantshängt Frame screw placement, Front view Top Swing, Top Hung					View orientation
					Scale
Drawing Number 61-39-E12					Revision
					A